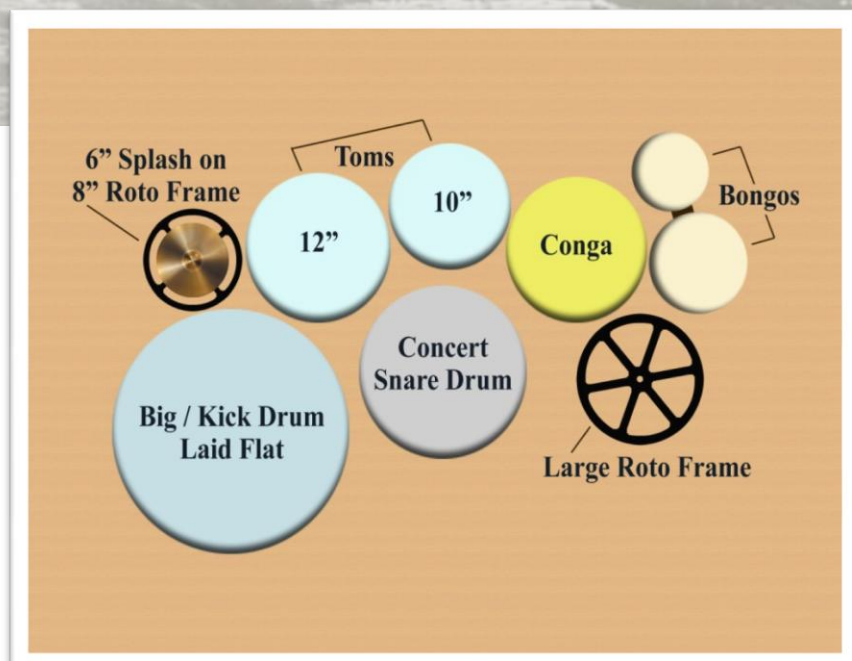


# Quake!

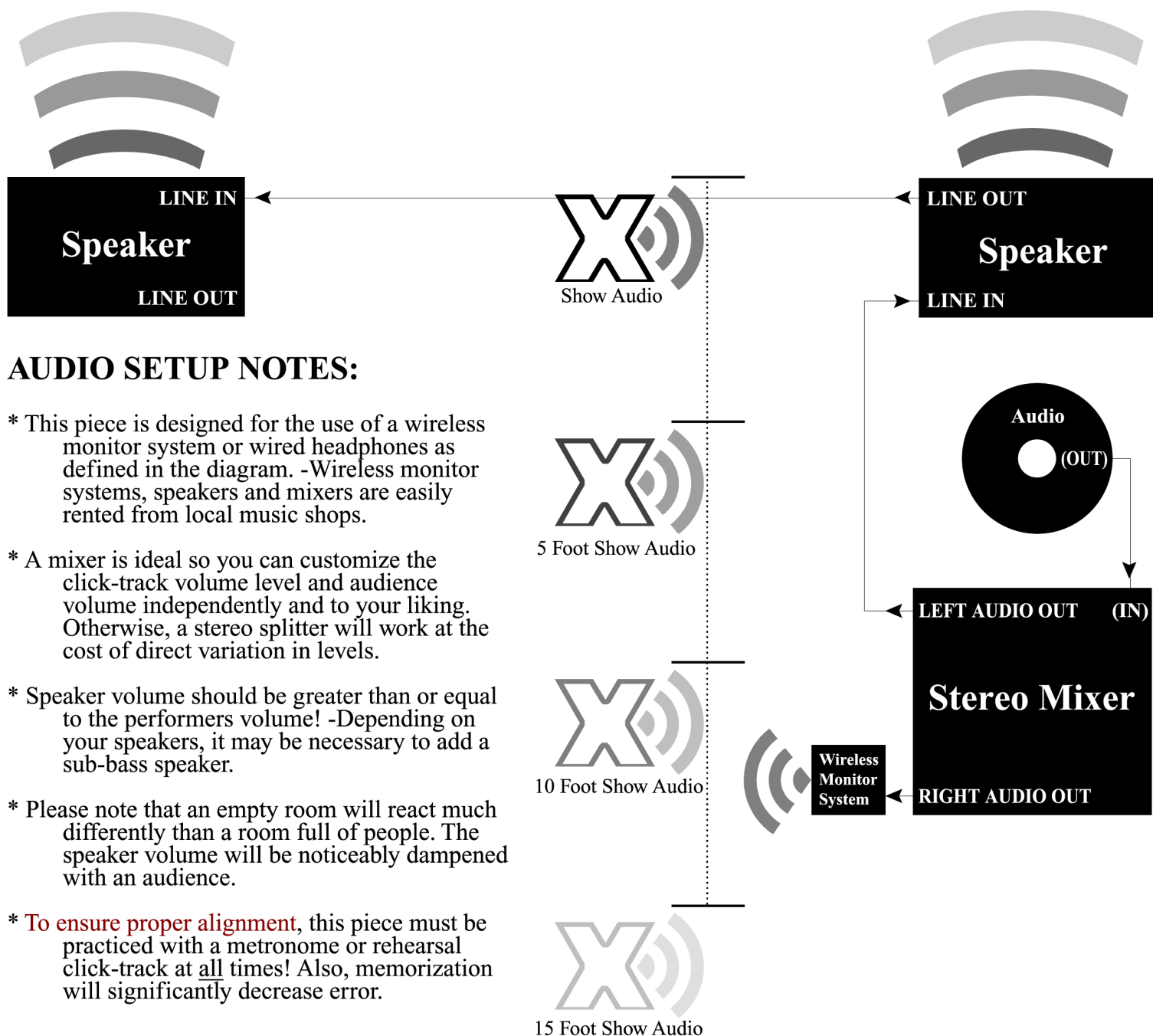
## For Multi-Percussion Solo & Digital Audio

By Dustin Lowes

Quake! is a programmatic representation of the May 22, 1960, earthquake that struck Valdivia Chile. It had a magnitude of 9.5 on the Richter scale and a XI on the (MMI) scale **-the strongest earthquake ever recorded by instruments in the world.** This quake shook the ground for almost 11 minutes, set off landslides, collapsed buildings and bridges, triggered a volcanic eruption, and released a massive tsunami.



Approximate time 7:11



## NOTATION:

- \* A marcato ( ^ ) accent always means rim shot
- \* E, ½, and C indicate Edge, Halfway, and Center
- \* A slashed note *suggests* a diddled sticking ( RR / LL )
- \* Dynamic markings separated by a slash ( / ) indicate accented and non accented notes  
-All dynamics stay constant until a new one is introduced
- \* Staccato ( . ) notes represent a dead/flat sound, whereas a tenuto ( - ) mark represents the most tone
- \* ( // ) Following a note indicates a choke: stopping the sound produced immediately following the attack

Special Thanks to:  
James McDonald



## Tectonic Stress

0:40

tonal cue

tonal cue

Multi-Solo

*bow metal ...be appropriately creative*

## Fore Show

0:29

1 cue

w/right: one handed / on and between drums  
 use timbali stick (vary speed / dynamics as desired)  
 w/left: random /y thud bass-drum center  
 w/mb: roll as desired

# Hypocenter

0:08

tonal cue

*tacet: cover drums with a sheet*

14 ♩ = 132  
snare off

*ppp*

*compose this section freely, possibly including word drums*

**P-V**

♩ = 132  
snare on

\* Right hand, 2 yarn mallets→  
[use both only as necessary]

\* Left hand, 1 yarn mallet → *meno[mf/mp]*

33

snare off

40

x : on rim

*gauge dynamic relative to venue/accompaniment*

## The Rupture

tonal cue

$$= ff$$

***ff*** *tacet*: prepare for next section

47

51

**S-Waves**

*mf/mp* [heavy handed...]

58

*f*

*meno[f/mf]*

*molto[mp]*

66

*f*

*ff*

*mf*

*mp*

*ff*

Flip to back of sticks as soon as possible

A Switch to snare stick



## Love Waves

# Wake!

**accel.** - - - - - 3

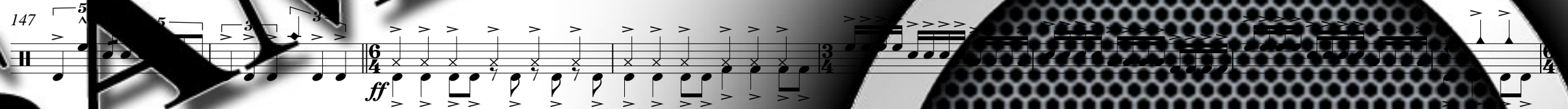
$$f \xrightarrow{\quad} mp$$

LI

# Rayleigh Waves

accel. \_ \_

## T Eruption



## Liquifaction



# Wake!

♩ = 198

## Landslide

Mostly near edge for clarity...

# The Tsunami

43

snare off

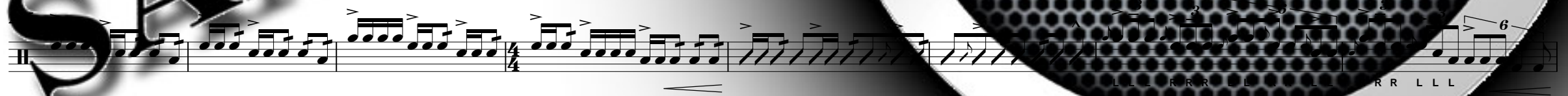
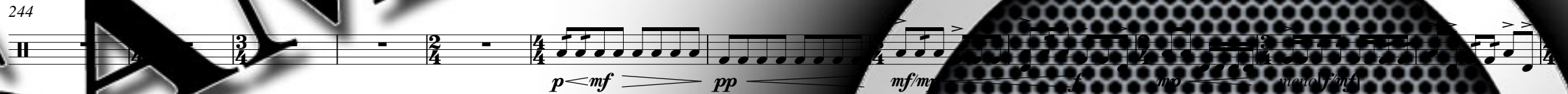
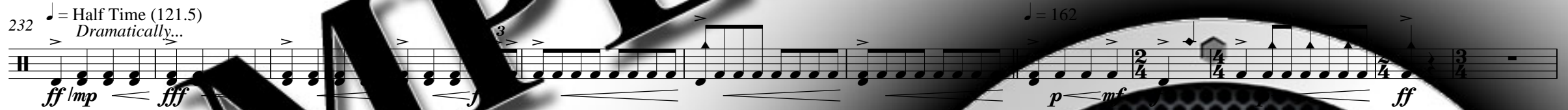
Switch to soft/puff nalle



Orrake!



### Tsunami Warning



## Shoaling Effect

283

meno *[ff/mf]* *mp* *ff* *mp* *ff* *f/mf* *fff/ff*

292

*ff/f* *f* *ff* *mf*

z = A terrifying yell

**The Coastline**

do not mute

As high as possible

